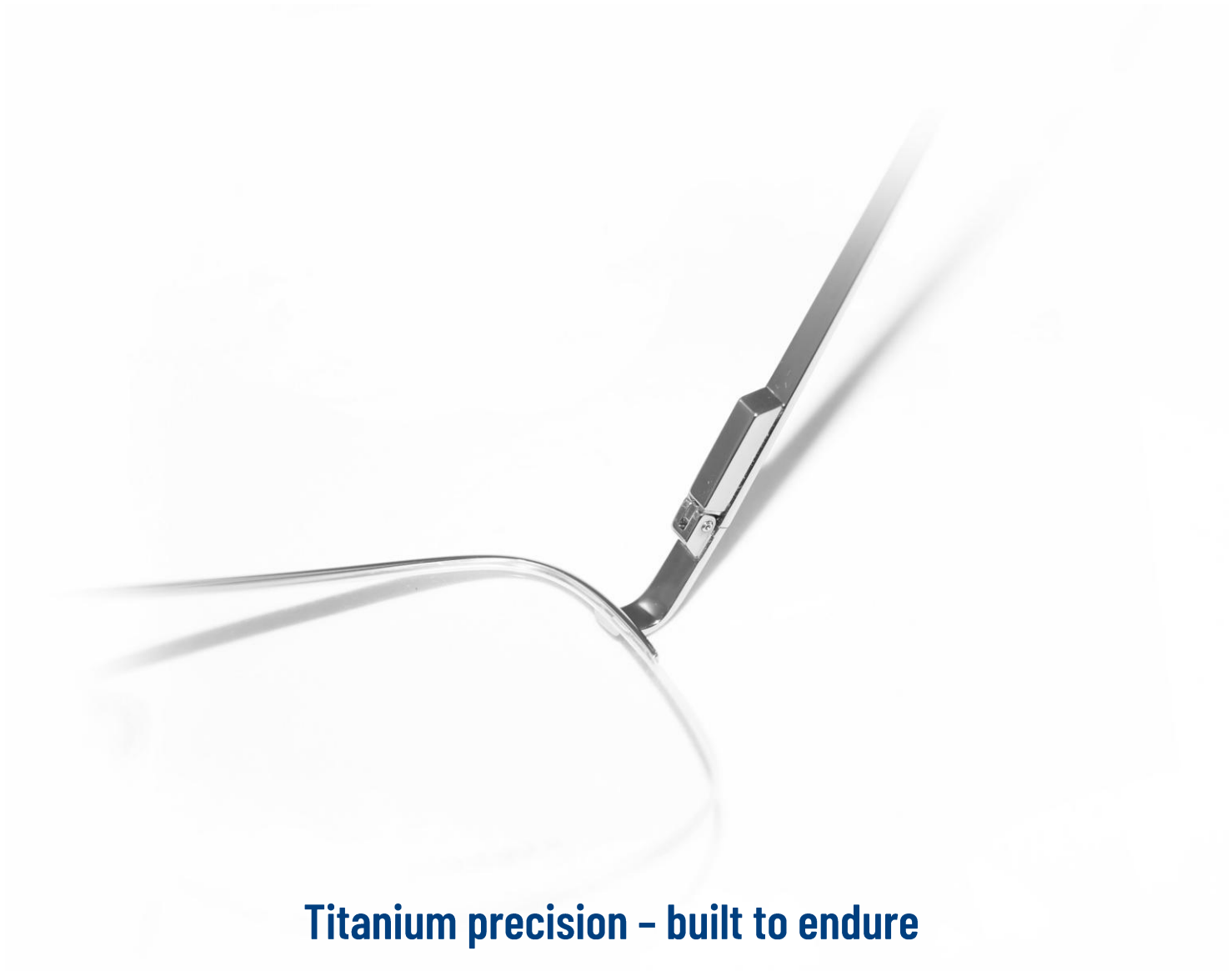


PURE TITANIUM FRAMES

TITANIUM

WORLD



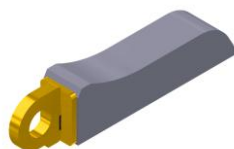
Titanium precision – built to endure

For slim titanium frames OBE offers flexIno **pure** titanium spring hinges based on a one-barrel side hinge. The stainless- steel mechanism is gold-plated to protect it during the production of titanium frames. We offer two connection systems for the case: laser welding or resistance welding.

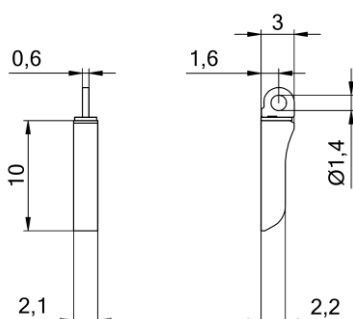
- 100% titanium spring hinge
- Robust one-barrel stainless-steel mechanism already pre-assembled
- Durable gold finish – ideal for aggressive processing conditions

60-24021

2.1 mm wide

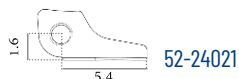


Laser welding



Matching parts

Front hinges for laser welding

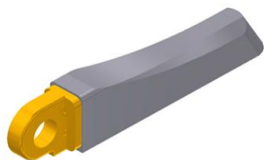


Screws

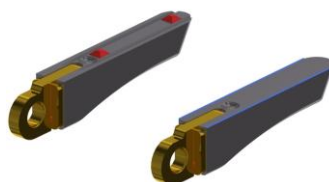


60-24X02

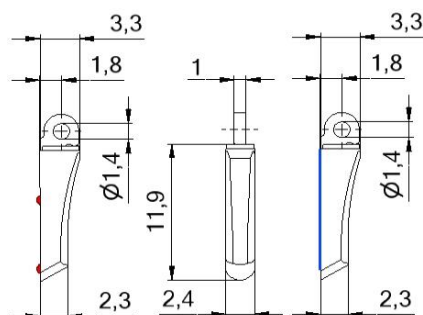
2.4 mm wide



Resistance welding

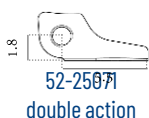


Laser welding

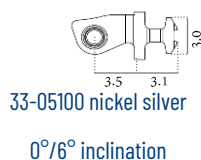


Matching parts

Front hinges for soldering and laser welding



Front hinges for plastic frames 90°

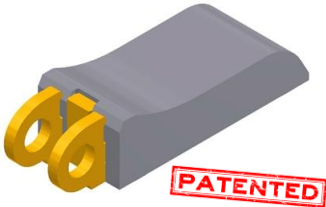
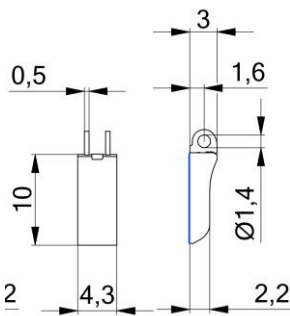



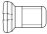
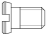
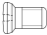
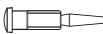


Screws



For wider frames OBE offers the flexUno 4.3 spring hinge with a two-barrel side hinge. The stainless-steel mechanism is gold-plated to protect it during the production of titanium frames. We offer two connection systems for the case: laser welding or resistance welding.

- 100% titanium spring hinge in classic look
- Robust two-barrel flexUno technology – already pre-assembled
- Durable gold finish – ideal for aggressive processing conditions

60-24164	
4.3 mm wide	
	
Delivery status	pre-assembled
Screw system	conical head M1.4, minus / plus-minus or torx
Matching parts	
Front hinges for soldering and laser welding	 52-24065
Front hinges for plastic frames 90° 0°/ 6° inclination	 33-05164 nickel silver
Step hinges for soldering and laser welding	 52-25264
Screws	 99-01816  99-02503  99-04816  99-02503.800 self aligning for break off

Wafer titanium spring hinges are characterised by a low profile. The case can be integrated in a very elegant way on the corresponding temple. We offer two versions: a one-barrel version in 2.8 mm width and a two-barrel version in 3.6 mm based on flexUno technology.

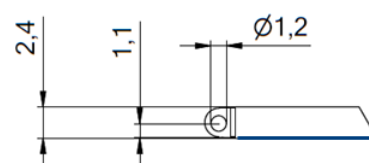
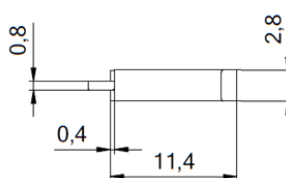
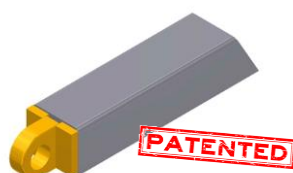
Features:

- Zero allergy one-barrel spring hinge in low profile for pure titanium frames
- Stable mechanism in stainless steel already pre-assembled
- flexUno one-barrel construction in wafer look
- Corrosion resistance thanks to gold plating

60-24006

laser welding

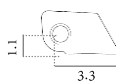
2.8 mm



Matching parts

Front hinges for soldering and laser welding

Screws



52-24106 (available also assembled with case)

99-01756

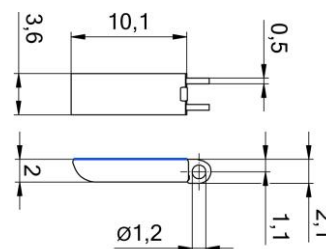
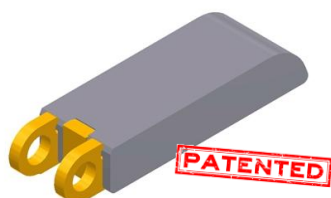
99-02031

Features:

- 100% titanium spring hinge in a low-profile design
- Robust two-barrel flexUno technology – already pre-assembled
- Durable gold finish – ideal for aggressive processing conditions

60-24161

3.6 mm

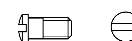
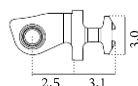
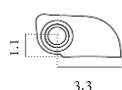


Matching parts

Front hinges for soldering / laser welding

Front hinges for plastic frames

Screws



52-24161

33-04066 nickel silver
0°/6° inclination

99-02023

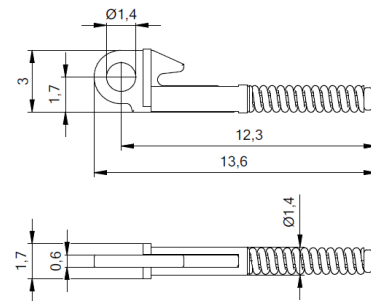
All flex mechanisms for monobloc temples are especially designed for titanium frames. Thanks to the integrated washer the temple movement is totally smooth. With the stamped OBE logo on the top of the side hinge you can easily recognise the original component.

flexino

INTEGRATED

60-44015.8XX - SIZE S

- 1 barrel spring mechanism with integrated anti-friction washer
- Gold plating protection for titanium temples against aggressive acids
- Recommended temple width 1.9 - 2.6 mm

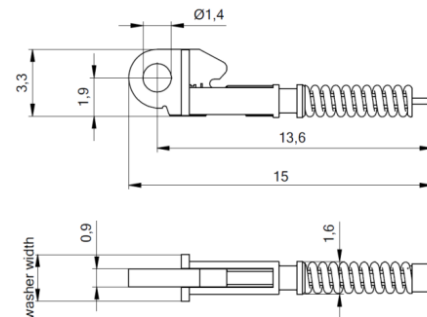


flexino

INTEGRATED

60-44022.8XX - SIZE M

- 1 barrel spring mechanism with integrated anti-friction washer
- Gold plating protection for titanium temples against aggressive acids
- Recommended temple width 2.1 - 3.5 mm

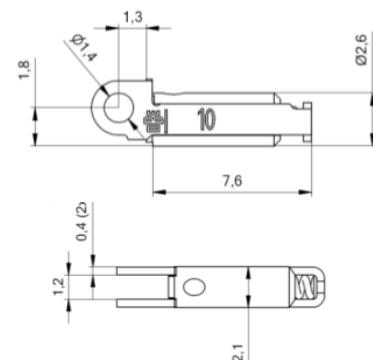
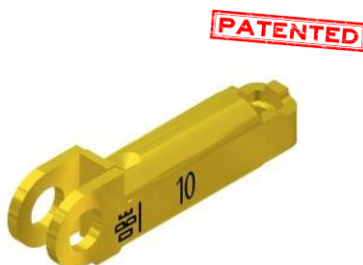


flexUno

INTEGRATED

60-44063.82X - SIZE XL

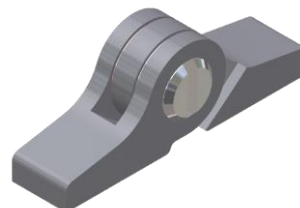
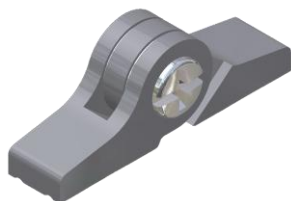
- 2-barrel mechanism with integrated anti-friction washer
- Gold plating protection for titanium temples against aggressive acids
- Zero rocking & easy adjustment with flexUno technology
- Recommended temple width 3.2 - 8.0 mm



All titanium regular hinges are pre-assembled and equipped with an integrated washer for a smooth movement. Optionally it is possible to combine the hinges with Space Screws to achieve an extra safety feature against loosening.

Features:



- Regular titanium with integrated anti- friction washer
- Delivery status assembled with screw



Profile: A	soldering	Profile: B	welding

Matching parts				
Art.No.	51-27412.100 51-27412.200	50-27422.100	51-27414.100 51-27414.200	50-27424.100 50-27424.200
Profile	A	B	A	B
Width	2.3	2.3	3.0	3.0
Slot	1.0	1.0	1.2	1.2
Screw head Ø	2.0	2.0	2.0	2.0



Space Screws from OBE are overmoulded with a high temperature resistant polyamide. This plastic provides an optimum long-lasting functionality in regular frames with 3 / 5 and even 7 barrels. Thanks to the compression of the plastic during the assembling process the play between screw and hole is reduced. The six embossed bumpers on the circumference of the polyamide provide an extra tolerance compensation along the length of the shaft.

				
Art.no.	Art.no.	Total length	Shaft	Head Ø
99-02305.600.00	99-05305.600.00	2.8	2.2	1.8
99-02310.600.00	99-05310.600.00	3.0	2.4	2.0
99-02322.600.00	99-05322.600.00	3.2	2.6	2.0
	99-05311.600.00	3.3	2.7	1.8
99-02324.600.00	99-05324.600.00	3.4	2.7	2.0
99-02328.600.00	99-05328.600.00	3.5	2.85	2.5
	99-05323.600.00	3.5	2.8	2.5
99-02393.600.00		3.6	3.0	2.0
99-02325.600.00	99-05325.600.00	4.0	3.3	2.0
99-02301.600.00	99-05301.600.00	4.3	3.6	2.0
99-02327.600.00	99-05327.600.00	4.5	3.8	2.0
99-02379.600.00	99-05379.600.00	4.6	3.9	2.0
99-02333.600.00	99-05333.600.00	5.0	4.3	2.0
99-02334.600.00	99-05334.600.00	5.5	4.8	2.0
	99-05331.600.00	5.7	4.9	2.5
99-02374.600.00		5.8	5.1	2.0
99-02356.600.00		6.1	5.4	2.0
99-02332.600.00	99-05332.600.00	6.4	5.7	2.0
99-02376.600.00		6.9	6.2	2.0
99-02375.600.00		7.5	6.8	2.0
99-02380.600.00	99-05332.600.00	8.5	7.8	2.0
	99-05308.600.00	9.2	8.5	2.0



Joining technology

Space Screws can be assembled manually or with automatic machines. We recommend to use WERA quality tools. These tools guarantee the best fit between the drive of the screw and the screwing tool having a high wear resistance. For manual assembling WERA handgrips with adjustable torques are suitable.

Slot	Torque	Art.no.
0.4 x 2.0		26-10120.035.00
P0		26-10120.036.00

