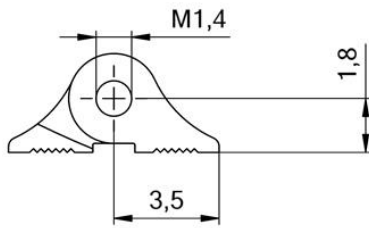
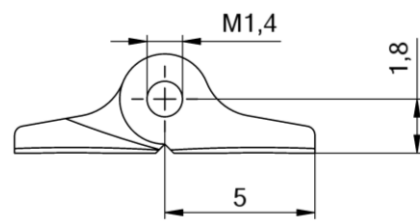
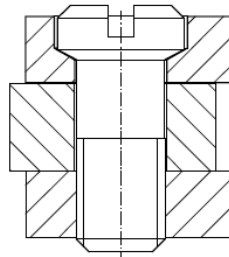
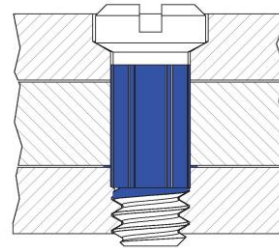


Features

- Regular nickel silver hinge for **metal temples**
- Optional smooth movement & anti-loosening function with Space screws
- Available widths: 2.1 / 2.5 / 3.0 / 3.5 / 4.0 mm
- Delivery status loose – assembled with screw upon request


Profile: A

Profile: B

Standard

Space

Matching parts

Art.No.	51-04200	50-04236	51-04206	51-04120	51-04418	51-04121	51-04205
Profile	A soldering	B welding	A soldering	B soldering	A soldering	B soldering	A soldering
Width	2.1	2.1	3.0	3.0	3.5	3.5	4.0
Slot	0.9	0.9	1.2	1.2	1.4	1.4	1.6
Screw head Ø	2.5	2.5	2.0	2.0	2.0	2.0	2.0
Screws	 99-05328.600 99-02328.600 99-01435		 99-05324.600 99-02324.600 99-01375		 99-05325.600 99-02325.600 99-01376 99-01700		 99-05327.600 99-02327.600 99-01377