

INJECTION & 3D PRINTED FRAMES → FLEX

INFLEXino

FOR 3D

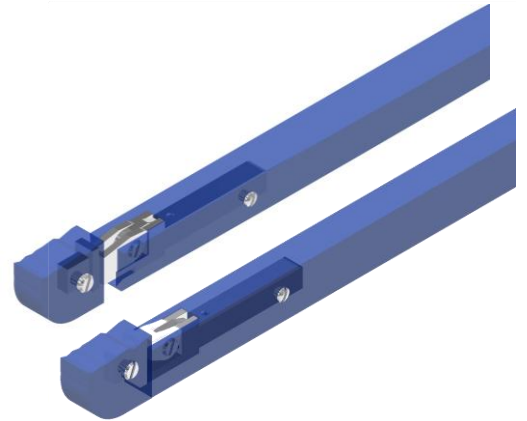


Anchored elegance with flexible design

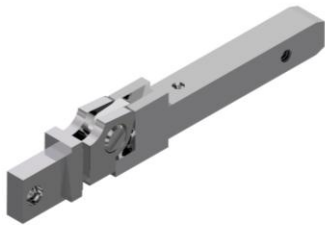
INFLEXino

FOR 3D

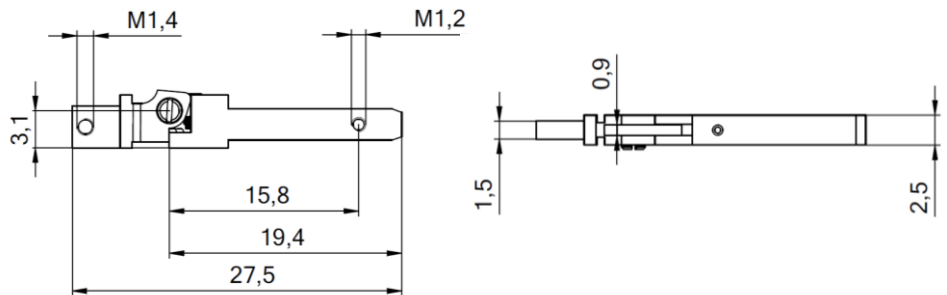
- Nickel silver spring hinge ready to use with or without gap
- Already assembled with front hinge
- Stable mechanism in stainless steel already pre-assembled



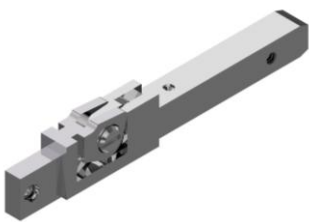
60-08042.890 - assembled with 33-02120 - With gap



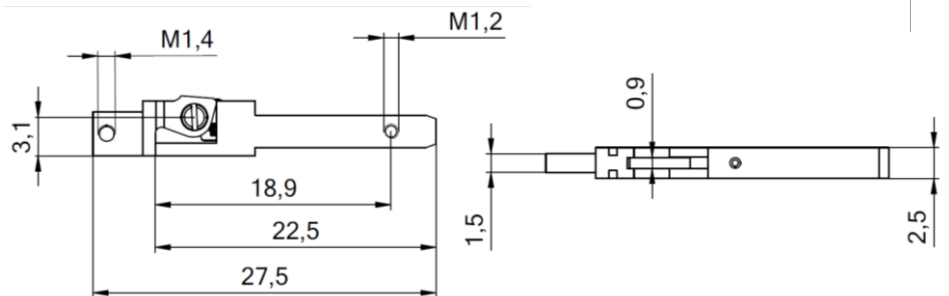
Hinge screw 99-02530



60-08042.990 - assembled with 33-02121 - gapless



Hinge screw 99-02530



Matching parts

Fixation to front



99-01375 M1.4 x 3.4

Fixation to temple



99-02027 M1.2 x 3.8

