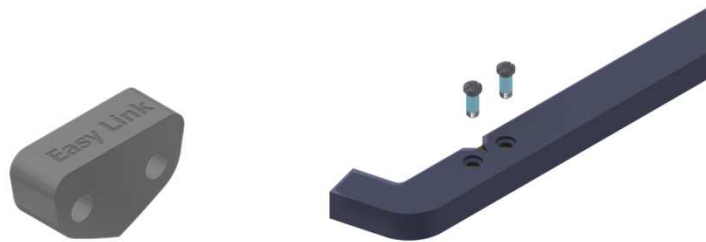


## EASYLINK STAINLESS STEEL - 0.6 | 1.3 | 3.0 mm

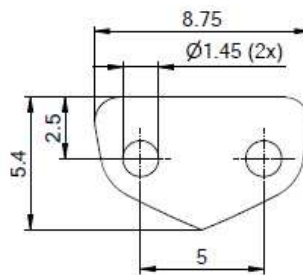
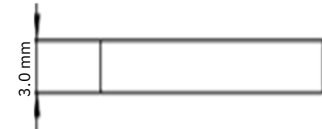
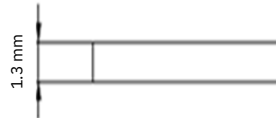
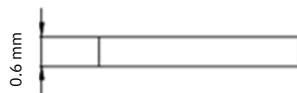
- Dual function hinge in stainless steel combining temple and front hinge in one unit
- Smooth movement with Space Screw technology integrated
- 3 widths available - widest version can be laser engraved



52-40012.000.X0

52-40010.000.X0

52-40013.000.X0



### Matching parts

Threaded sleeve



93-00023.040.00

Hinge screws



Select the appropriate Space Screws from page 106 according to the temple height