

D-HINGE STAINLESS STEEL - 3.0 mm

- High-grade stainless-steel temple hinge in two designs
- Stability control: Secure temple attachment - fixed with a robust screw
- Movement control - Space Screw system ensures a consistent and reliable feel



70-42008.400.01/02

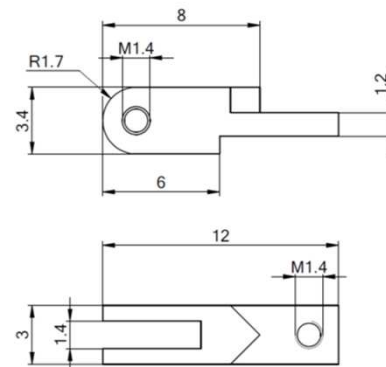
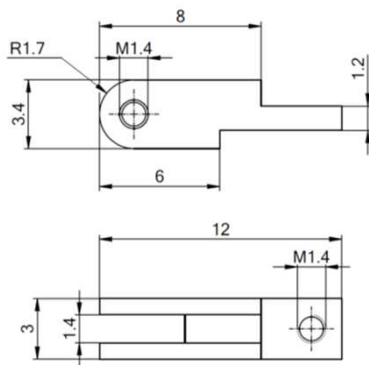
injection / embedded
in 3D Printing

fixation with screw -
exchangeable

70-42008.800.01/02

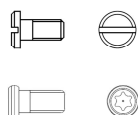
injection / embedded
in 3D printing

fixation with screw -
exchangeable



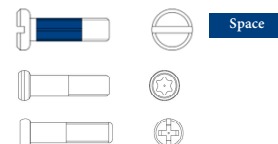
Matching parts

Fixation to temple



99-01435
99-04724

Hinge screws



99-05331.600
99-04730
99-01719