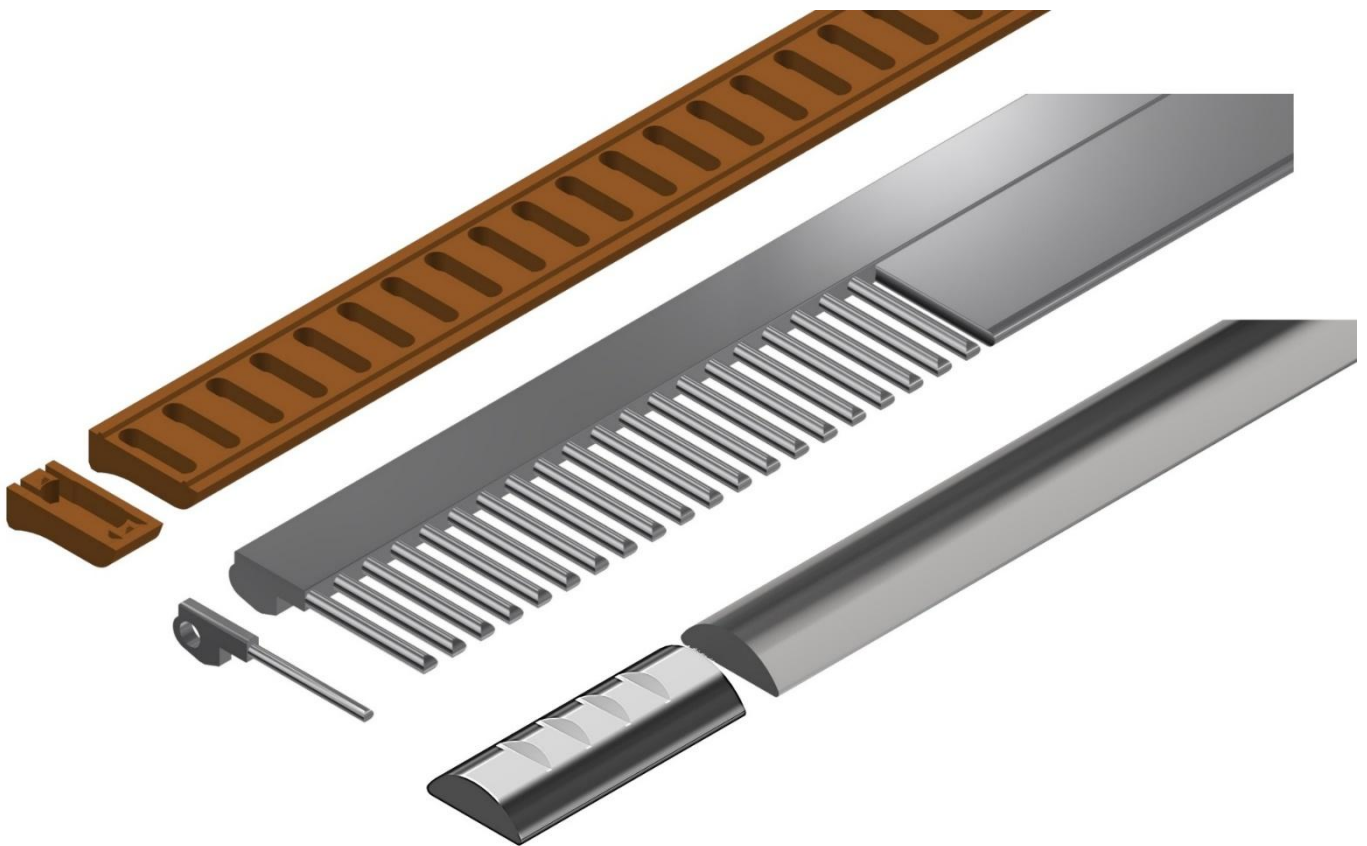




THE POWER OF PROFILES

TAILOR MADE SOLUTIONS
LESS MACHINING
MORE EFFICIENCY
LOWER COSTS



19512109

Technology

OBE is a specialist since 1904 in manufacturing small metal parts for different industries. We produce on demand precision parts for spectacles, gears, automobiles, furniture etc. From the very beginning of a component's development, you receive our expert support. Here, initial designs, 3D CAD models, and even prototypes can be created.

Key facts

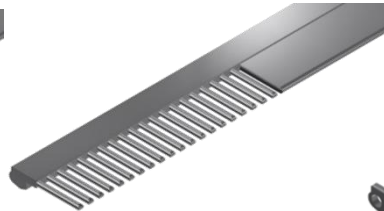
- Possible machining operations: sawing, milling, drilling, punching, thread cutting etc.
- High speed metal cutting up to 80 pieces per minute
- High precision components with an accuracy of $\pm 0,03\text{mm}$
- Annual volumes up to multi-digit million units
- Current profile sizes: 85mm length x 18mm width x 7mm height
- Materials: titanium, nickel silver, bronze, various stainless steel
- More than 250 different profiles in production
- Permanent measurement & surface control
- Consistently dimensionally accurate contour

Production steps

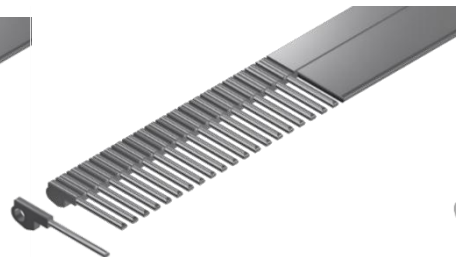
With our profielplus technology we process pre-shaped metal profiles out of different materials by reaching the accurate final required shape. This is done in a highspeed automated production exclusively in own designed and constructed machines. The drawings below show two productions of profile processing for different products in different materials.



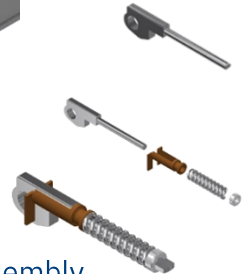
Initial profile



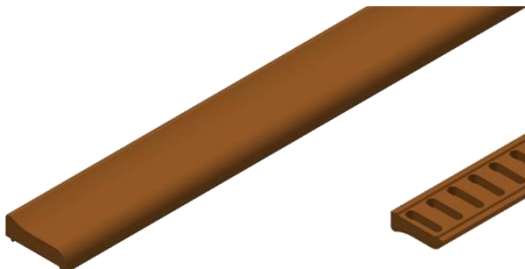
Circular milling



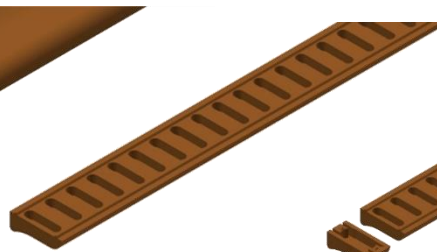
Separation



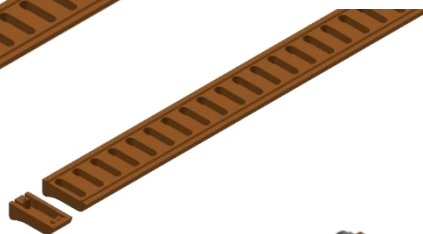
Assembly



Initial profile



Pocket milling



Separation



Assembly

Additional inhouse processes

In addition to the production of the core part OBE offers many possibilities to finish the products i.e. vibratory tumbling, high gloss polishing, sand blasting, galvanizing, soldering welding, automatic & manual assembling, packing etc.

Applications

Here you can see six examples of efficiently manufactured profile components, along with their corresponding dimensions and the materials



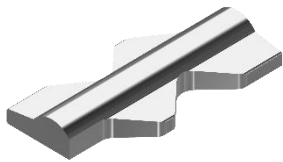
Guide rail - 1.4435
L 68 x W 3.8 x H 2.3



Mounting strip - 1.4301
L 6.5 x W 2.5 x H 0.8



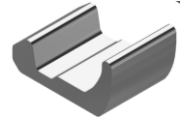
Clamping plate - 1.4441
L 5.0 x W 4.0 x H 1.0



Pivot segment - 1.3505
L 27.7 x W 13.5 x H 4.0



Contact - Titanium Gr. 2
L 2.0 x W 2.0 x H 1.0



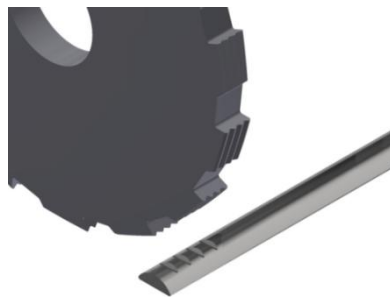
Hook - 1.4435
L 2.6 x W 4.0 x H 1.8

Case study

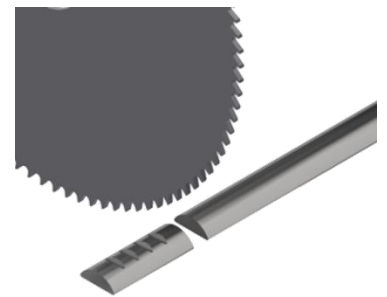
Attached is an examples of a component designed for us as a magnetic door opening element.



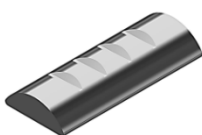
Initial profile



Contour



Separation



Nickel plating



Assembly & functional test



In operation

ISPRINGEN



Facts about OBE

Founded 1904

> 550 employees worldwide

Key supplier in eyewear

Key technologies:

Profile processing | Screw production | Surface technique

4 facilities worldwide

ISO 9001:2015

DIN EN ISO 14001 and EMAS



OBE GmbH & Co. KG · Turnstr. 22 · 75228 Ispringen · Germany
Tel. +49 7231 802-0 · www.obe.de · info@obe.de