

**INJECTION & 3D PRINTED FRAMES → FLEX**

**INFLEXino**

FOR 3D



**Anchored elegance with flexible design**

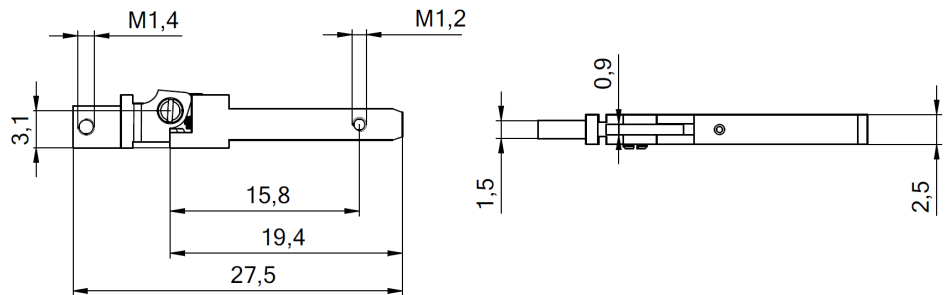
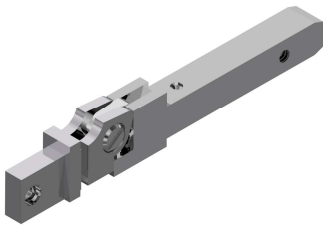
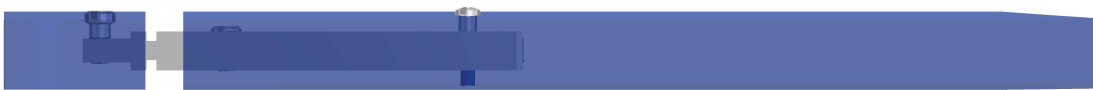
# INFLEXino

FOR 3D

- Spring hinge for 3D printed frames ready to use
- Ready to use – just screw to the front and to the temple!
- Open or closed design – always a perfect match
- Minimum temple width with plastic 4.5 mm

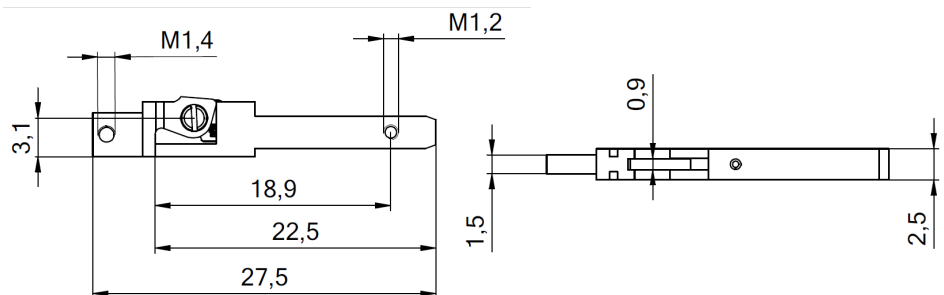
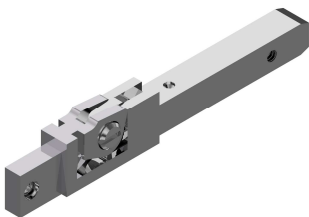


## 60-08042.890 – assembled with 33-02120 – OPEN LOOK



Hinge screw 99-02530

## 60-08042.990 – assembled with 33-02121 – CLOSED LOOK



Hinge screw 99-02530

Fixation to front	Fixation to temple
99-01375 M1.4 x 3.4	99-02027 M1.2 x 3.8

