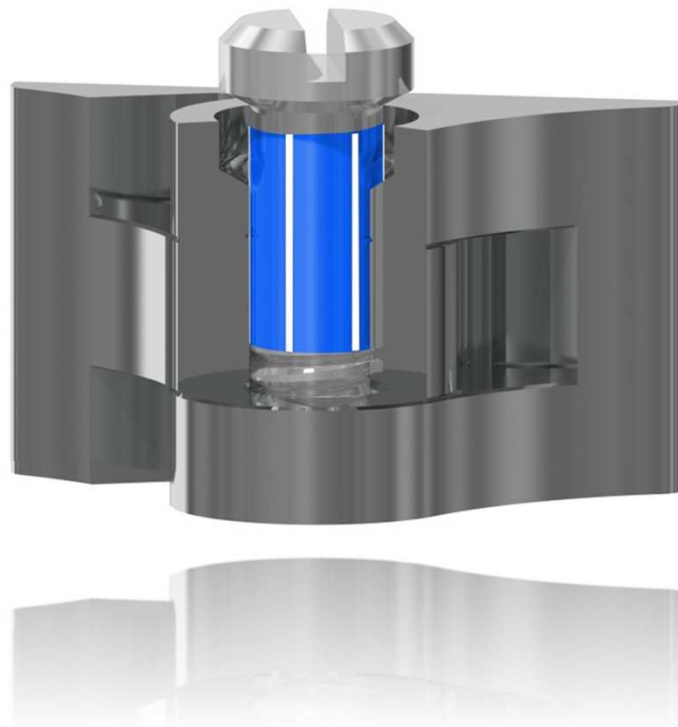


SPECIAL SCREWS AND ACCESSORIES → SAFETY SCREWS FOR HINGES

Space Screws

ISS TECHNOLOGY

PATENTED



Stay in place - Move in grace
Injection Safety Screws

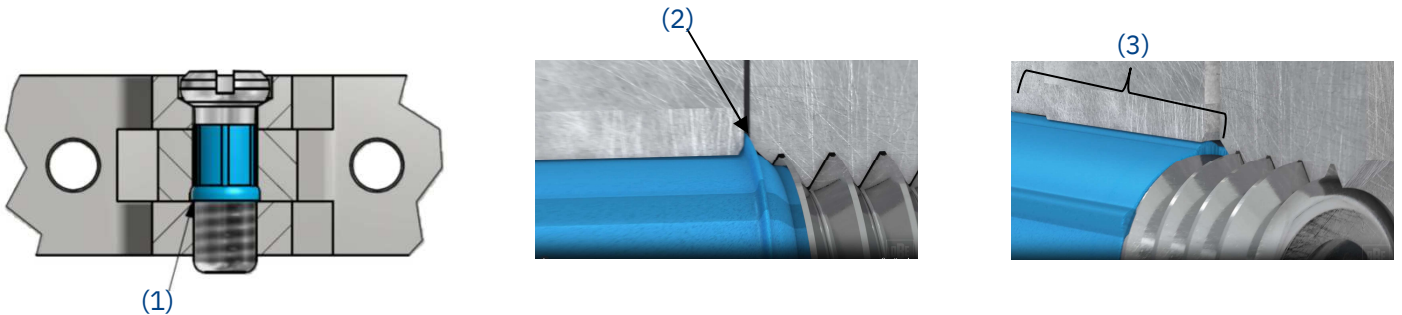
The product

Space Screws made from Stainless steel (1.4305) and are injected with a high-temperature-resistant polyamide. This screw system is designed for regular hinges, ensuring safety and smooth movement. It is possible to produce on request Space Screws also in 316L.



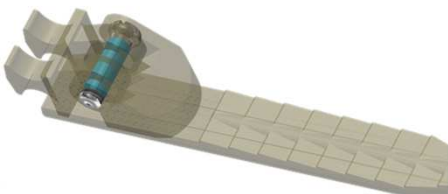
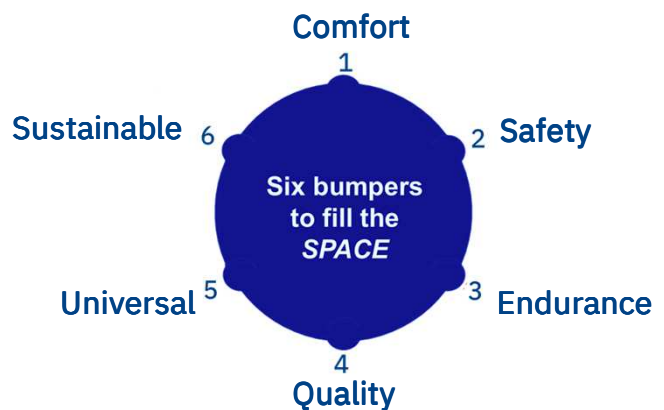
Functionality

When the screw is inserted into the tapped hole the polyamide is pushed backwards (1). This compression reduces the play between screw and drilling creating a locking function (2). Additionally, the lateral plastic ribs are compressed along the entire length of the hole. This extra plastic compensates the tolerance resulting from the drilling process. (3)



Benefits

1. Long-lasting smooth movement
2. Screws stay tight
3. Large tolerance compensation
4. No backlash
5. System usable also in multibarrel hinges
6. Waste free plastic injection





Coating

Nickel- or gold-plating can be realised in an assembled status together with hinge. A drying temperature of one hour at 130°C is recommended

Collection



Space screws are available in a variety of lengths always with a **M1.4** thread with 3 types of torque: plus minus and minus. Torx® screws can be realised upon request.

				
Art.no.	Art.no.	Total length	Shaft	Head Ø
99-02305.600.00	99-05305.600.00	2.8	2.2	1.8
99-02310.600.00	99-05310.600.00	3.0	2.4	2.0
99-02322.600.00	99-05322.600.00	3.2	2.6	2.0
	99-05311.600.00	3.3	2.7	1.8
99-02324.600.00	99-05324.600.00	3.4	2.7	2.0
99-02328.600.00	99-05328.600.00	3.5	2.85	2.5
	99-05323.600.00	3.5	2.8	2.5
99-02393.600.00		3.6	3.0	2.0
99-02325.600.00	99-05325.600.00	4.0	3.3	2.0
99-02301.600.00	99-05301.600.00	4.3	3.6	2.0
99-02327.600.00	99-05327.600.00	4.5	3.8	2.0
99-02379.600.00	99-05379.600.00	4.6	3.9	2.0
99-02333.600.00	99-05333.600.00	5.0	4.3	2.0
99-02334.600.00	99-05334.600.00	5.5	4.8	2.0
	99-05331.600.00	5.7	4.9	2.5
99-02374.600.00		5.8	5.1	2.0
99-02356.600.00		6.1	5.4	2.0
99-02332.600.00	99-05332.600.00	6.4	5.7	2.0
99-02376.600.00		6.9	6.2	2.0
99-02375.600.00		7.5	6.8	2.0
99-02380.600.00	99-05332.600.00	8.5	7.8	2.0
	99-05308.600.00	9.2	8.5	2.0



Joining technology

Space Screws can be assembled manually or with automatic machines. We recommend to use WERA quality tools. These tools guarantee the best fit between the drive of the screw and the screwing tool having a high wear resistance. For manual assembling WERA handgrips with adjustable torques are suitable.

Slot	Torque	Art.no.
0.4 x 2.0		26-10120.035.00
P0		26-10120.036.00

Space Screws

ISS TECHNOLOGY



Scan me!

