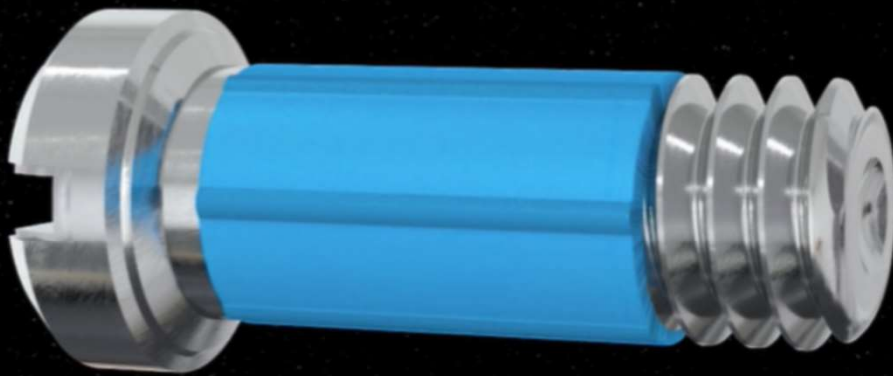


Space Screws

MADE IN GERMANY

PATENTED

Stay in place – move in grace



Präzision

Precision screws with plastic coating

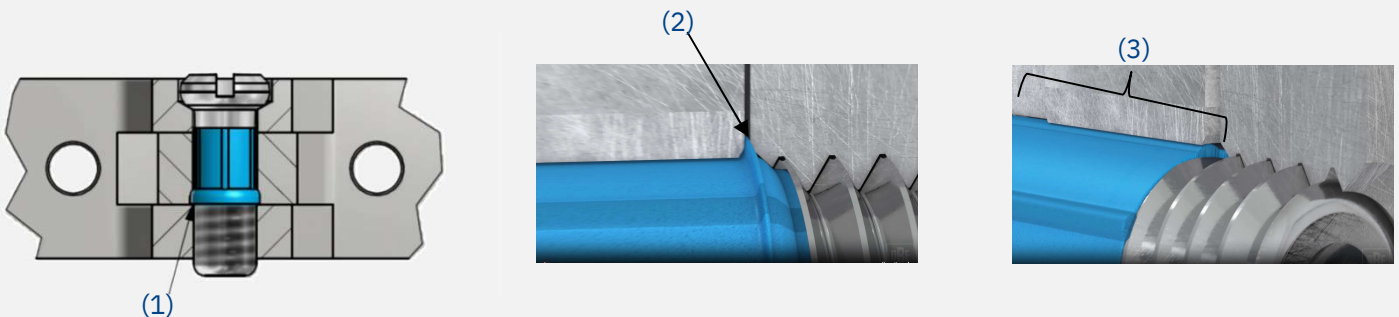
The product

Space Screws are built for hinges, joints and dynamic systems. They are made from stainless steel (303 or optionally 316L) and are injected with a high-temperature-resistant polyamide. This safety system provides a secure connection and at the same time a smooth movement.

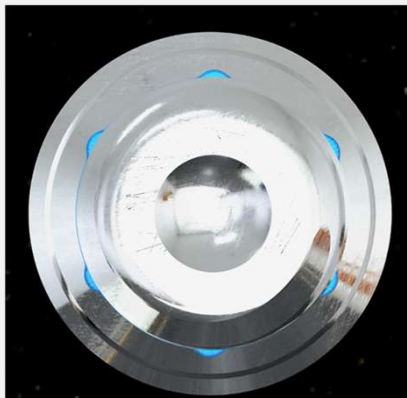


Functionality

When the screw is inserted into the tapped hole the polyamide is pushed backwards (1). This compression reduces the play between screw and drilling creating a locking function (2). Additionally, the lateral plastic ribs are compressed along the entire length of the hole. This extra plastic compensates the tolerance resulting from the drilling process. (3)



Below there is an illustration of a cross-section of the space screw and an additional representation of how the six ribs appear in the installed state. They provide tolerance compensation across the entire surface.





Engineered for connecting small metal components

Application

Space Screws are designed especially for dynamic applications. Thanks to the injected plastic which the screw once mounted creates a smooth feeling when the unit is moved. It can be used in all kind of small constructions with movable joints ie. Medical instruments, watch mechanisms, articulated components in medical prosthetics, laptop hinges, miniature robotic arms, eyewear hinges etc.

Space Screws can be assembled manually or with automatic machines. We recommend to use WERA quality tools. These tools guarantee the best fit between the drive of the screw and the screwing tool having a high wear resistance. For manual assembling WERA handgrips with adjustable torques are suitable. The maximum torque transmission should not exceed 12Ncm when using a screwdriver.

Slot	Torque	Art.no.
0.4 x 2.0		26-10120.035.00
P0		26-10120.036.00

References

A coating with nickel or gold can be realised and the process temperature should not surpass 200°C for a short term. A following drying temperature of one hour at 130°C is recommended.

Only 2.6% of the plastic used remains on the screw, while 97.4% is recycled within the closed-loop sprue-system.

Applications & Industries

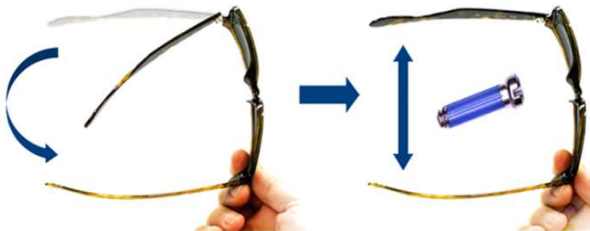
Luxury



Mobile devices



Eyewear



Consumer



Consumer



Medical instruments



Applications & Industries

Consumer



Surgery instruments



Hearing aids



3D printing



Sensors






Robotics



Collection

Space screws are available in a variety of lengths always with a **M1.4** thread with 3 types of torque: plus-minus and minus. Torx® screws can be realised upon request.

					
Art.no.	Art.no.	Art.no.	Total length	Shaft	Head Ø
99-02305.600.00	99-05305.600.00		2.8	2.2	1.8
99-02310.600.00	99-05310.600.00		3.0	2.4	2.0
99-02322.600.00	99-05322.600.00		3.2	2.6	2.0
	99-05311.600.00		3.3	2.7	1.8
99-02324.600.00	99-05324.600.00	99-04324	3.4	2.7	2.0
99-02328.600.00	99-05328.600.00		3.5	2.85	2.5
	99-05323.600.00		3.5	2.8	2.5
99-02393.600.00			3.6	3.0	2.0
99-02325.600.00	99-05325.600.00		4.0	3.3	2.0
99-02301.600.00	99-05301.600.00		4.3	3.6	2.0
99-02327.600.00	99-05327.600.00	99-04327	4.5	3.8	2.0
99-02379.600.00	99-05379.600.00		4.6	3.9	2.0
99-02333.600.00	99-05333.600.00	99-04333	5.0	4.3	2.0
99-02334.600.00	99-05334.600.00		5.5	4.8	2.0
	99-05331.600.00		5.7	4.9	2.5
99-02374.600.00			5.8	5.1	2.0
99-02356.600.00			6.1	5.4	2.0
99-02332.600.00	99-05332.600.00		6.4	5.7	2.0
99-02376.600.00			6.9	6.2	2.0
99-02375.600.00			7.5	6.8	2.0
99-02380.600.00	99-05380.600.00		8.5	7.8	2.0
	99-05308.600.00		9.2	8.5	2.0



Custom screws are available upon request. Additionally, we can provide Torx screw heads as needed. As a complement to our screws, we also offer security nuts with plastic overmolding. In addition to the same anti-loosening benefits, they enable assembly up to three times faster compared to similar products.

Top 10 benefits of movement control Space Screws

1. **Loosening Prevention:** Transition fit friction stops accidental loosening
2. **Tolerance Compensation:** Adjusts to manufacturing variances
3. **Secure Bond:** Polyamide adheres stably to the screw
4. **Vibration Resistant:** High torque ensures performance during vibrations
5. **Versatile Settings:** Allows for precise adjustments
6. **Ready-to-use:** No extra assembly parts needed
7. **High Productivity:** Supports automatic feeding and fastening
8. **Clean Threads:** No residues like glued connections
9. **Effective Sealing:** Protects against gases and liquids
10. **Sustainable:** 90% of recycled plastic sprues are used for injection of new screws



Facts about OBE

- Founded 1904
- > 550 employees worldwide
- Key supplier in eyewear
- Key technologies:
 - Profile processing
 - Screw production
 - Galvanic
- 4 facilities worldwide
- ISO 9001:2015
- DIN EN ISO 14001 and EMAS

