

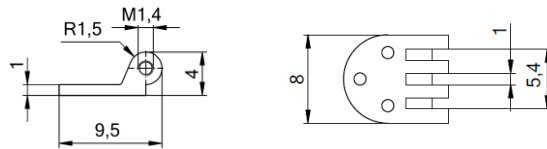
Features

- Nickel silver riveting hinges – nickel plated
- Main application in **plastic temples**
- Smooth movement with Space Screws



51-05082

riveting

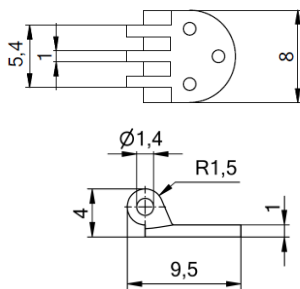


0°/6° inclination

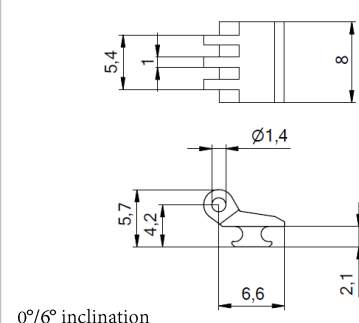
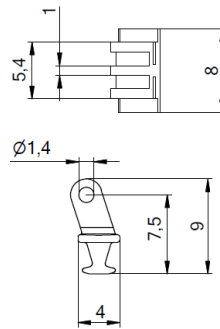
51-05083

33-04233

33-05147



0°/6° inclination



0°/6° inclination

Matching parts

Screws

Rivets



99-05380.600
99-02380.600

11-20247 - 8.0 mm
11-20251 - 5.4 mm
11-20245 - 4.2 mm
11-20246 - 3.0 mm