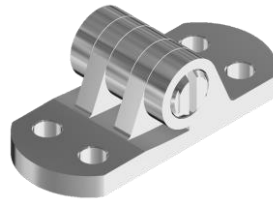


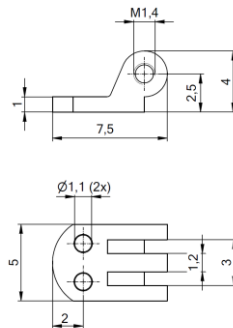
Features

- Nickel silver riveting hinges – nickel plated
- Main application in **plastic temples**
- Smooth movement with Space Screws



51-05011.903.01/02

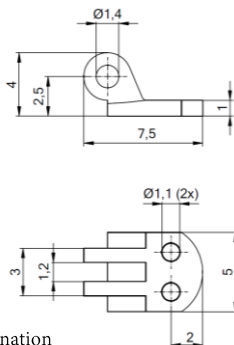
riveting



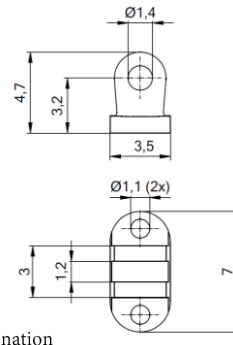
51-05011.903.03

51-05019

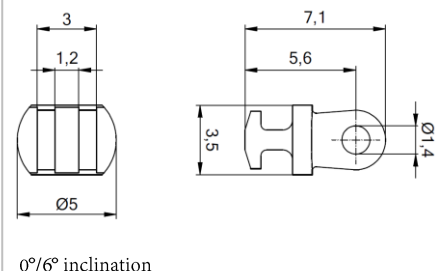
33-04554



0°/6° inclination



0°/6° inclination

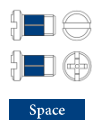


0°/6° inclination

Matching parts

Screws

Rivets



99-05334.600
99-02334.600



11-20247 - 8.0 mm
11-20251 - 5.4 mm
11-20245 - 4.2 mm
11-20246 - 3.0 mm

11-20260 - double rivet