

LITE-Line

NICKEL SILVER

Basic spring hinge collection

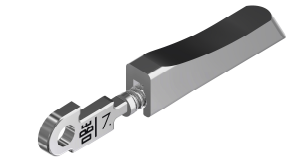


NICKEL SILVER SPRING HINGES

LITE-Line

NICKEL SILVER

- Nickel silver spring hinge with closed bottom
- One barrel construction
- Easy click-in mechanism made in stainless steel
- Best application mainly in metal and acetate frames



| | 2.0 mm | 2.4 mm | 2.8 mm |
|--------------------------------------|----------------------------------|----------------------------------|----------------------|
| | | | |
| | | | |
| Art No | 60-08080 / 73-08080 | 60-08084 / 73-08084 | 60-08088 / 73-08088 |
| Technical data | | | |
| Matching parts | | | |
| Front hinges for soldering | 52-05075 | 52-05097 | 52-05194 |
| Front hinges for plastic frames 90° | 33-05105 | 33-05104 | 33-05106 |
| Front hinges for plastic frames 180° | 33-05010 | 33-05012 | 33-05063 |
| Step hinges for soldering | 52-05112 | 52-05111 | 52-05153 |
| Screws | 99-01803 99-02530 99-04803 | 99-01811 99-02525 99-04811 | 99-01813 99-02501 |



OBE GmbH & Co. KG · Turnstr. 22 · 75228 Ispringen · Germany
Tel. +49 7231 802-0 · www.obe.de · info@obe.de