

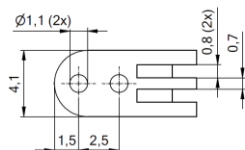
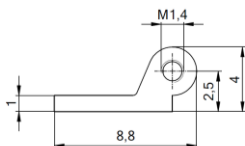
**Features**

- Nickel silver riveting hinges – nickel plated
- Main application in **plastic temples**
- Smooth movement with Space Screws



51-05000.903.01/02

**riveting**

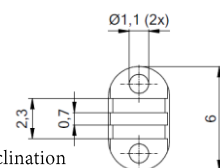
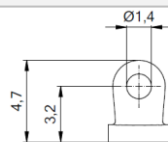
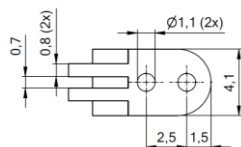
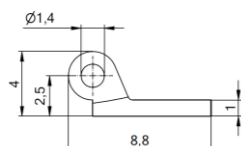


0°/6° inclination

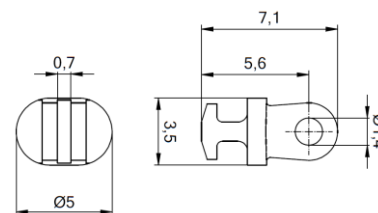
51-05000.903.03 - 0° inclination  
51-05068.963.03/04 - 6° inclination

51-05024

33-04555



0°/6° inclination

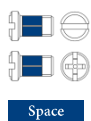


0°/6° inclination

**Matching parts**

Screws

Rivets



Space



99-05379.600

99-02379.600

11-20247 - 8.0 mm  
11-20251 - 5.4 mm  
11-20245 - 4.2 mm  
11-20246 - 3.0 mm

11-20260 - double rivet